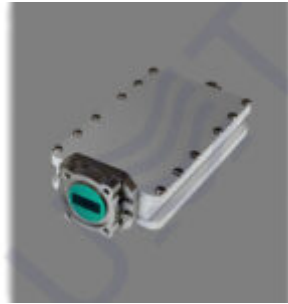


BUC-KU002-8.8 V2.0



BUC-Ku002-8.8 v2 block up-converter **0.2 W** (**ALC:1dB0 m8.8 GHz**).

25 BUC10 MHz

ALC 25 dB

(**IP**)

+ **LED** .

:	
	950 – 1950 MHz
	50 Ohm
	-15 dBm
VSWR	1.5
	N-type Female
ALC	25 dB
ALC	-30 dBm
:	
LO	8.80 GHz

LO:	
@1 kHz	-80 dBc/Hz
@10 kHz	-85dBc/Hz
@100 kHz	-100dBc/Hz
LO	± 2ppm
:	
	9.75 – 10.75 GHz
@P1dB	0.2 W
ALC	30 mW
	45 dB
IMD3	ALC -37 dBc
	Waveguide WR75, Flange PBR120
VSWR	2
:	
	±1.5 dB
:	
@P1dB	-55 dBc
	-30 dBm
LO	ALC -40 dBm
	60 dB
:	

	18 – 30 VDC, nominal 24 VDC
	6 W
:	
	-40 to +50 (-40 to +122)
	-60 to +80 (-76 to +176)
	100%, non-condensing
:	
(W x H x D)	75x33x157 mm
	0.55 kg

(UMT LLC)

!

/