

DVB-T2



DVB-T2

(OEM)

L-band DVB-S-S2-T modulator board can be used in various converters, modulators, transmodulators and other digital broadcasting equipment.

The sources of input transport stream for this modulator board may be the followings:

- [2 ch DVB-S-S2 receiver](#);
- [DVB IP input/output board](#);
- [DVB ASI TS input board](#);
- *etc.*

KEY FEATURES:

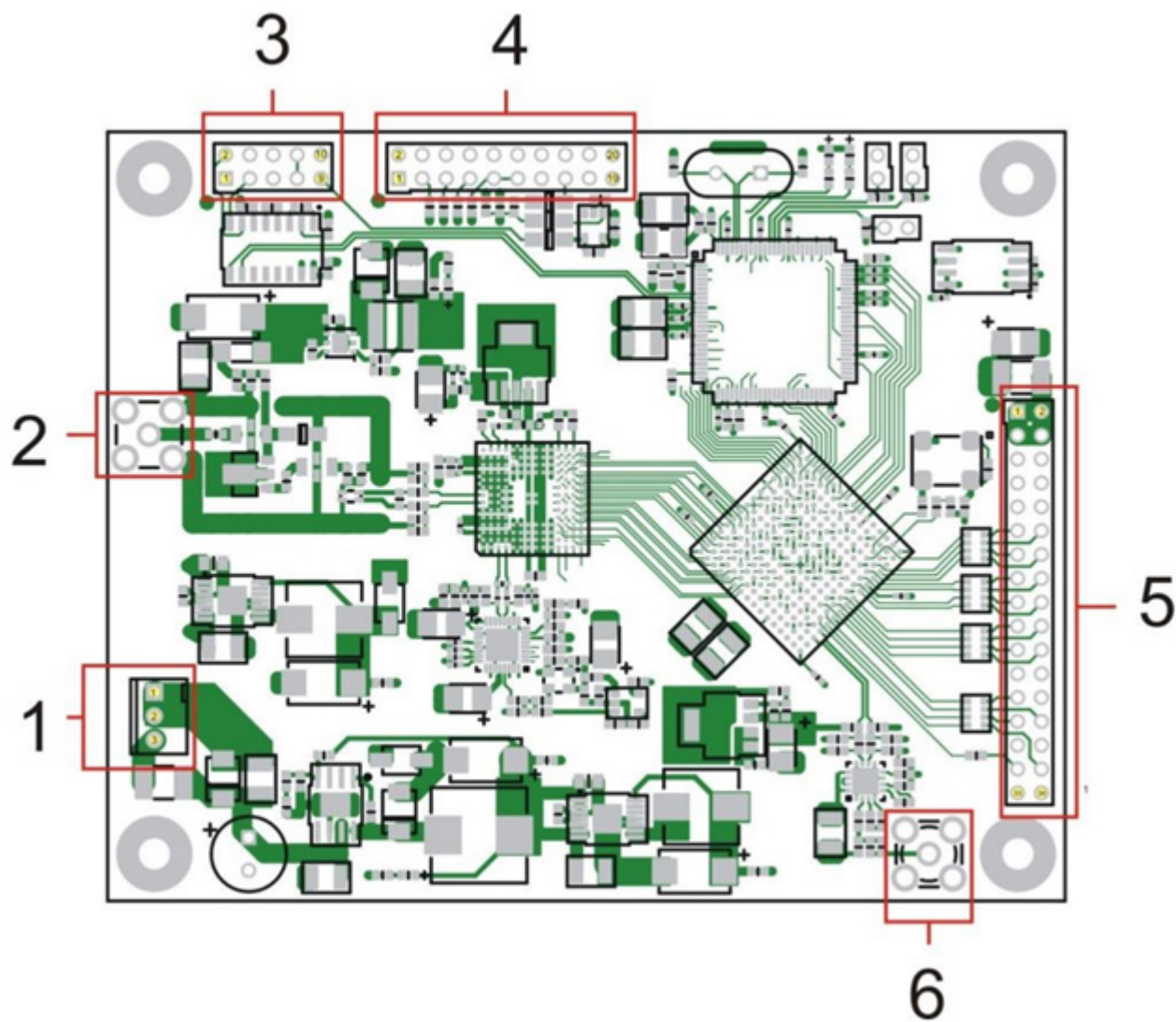
- High quality of the modulated signal;
- Remote management, monitoring and configuration by IP (using our [IP control board](#))
- High symbol rate;
- Modulation up to 32APSK;
- Small size and low power consumption;
- Flexibility of scheme and devices which include our [DVB boards](#).

[Video instructions about L-band DVB-S-S2-T modulator board watch here](#) **Youtube** Image not found or type unknown

	DVB-T2

	DVB	ASI
	PLD-34	
DVB-T2		
	UHF (174–862 MHz)	
	QPSK, 16QAM, 64QAM, 256QAM	
MER	>42 dB@ 500MHz	
TS	Normal, High eff	
FEC	Normal, Short	
	1/2, 3/5, 2/3, 3/4, 4/5, 5/6	
	QPSK, 16QAM, 64QMA, 256QAM	
L1-Post	BPSK, QPSK, 16QAM, 64QAM	
	1k, 2k, 4k, 8k, 8kext., 16k, 16k ext.	
Pilot S	PP2, PP3, PP8	
	1/4, 19/128, 1/8, 19/256, 1/16, 1/32, 1/128	
	1.7, 5, 6, 7 and 8 MHz	
RFout	-6 dBm.... +4.2 dBm @ 50	
	TCP/IP	

	8...16 V
	~ 6 W
	102x82 mm



- 1 - P
- 6
- 2 - S
- 3 - P
- contr
- 4 - P
- 5 - P
- 6 - A

Connector 1 - module power supply

- 1 GND
- 2 GND
- 3 8...16 VDC, 6 W

Connector 3 - management module, RS-232

- | | | | |
|---|---------------|----|---------------|
| 1 | Not connected | 2 | TxD |
| 3 | RxD | 4 | Not connected |
| 5 | GND | 6 | Not connected |
| 7 | Con. with 8 | 8 | Con. with 7 |
| 9 | Reset | 10 | GND |

Connector 5 - tra

- 1 + 5,0 V
- 3 + 5,0 V
- 5 Not connect
- 7 Not connect
- 9 GND
- 11 TSCLK
- 13 Not connect
- 15 TSDATA 6
- 17 TSDATA 4
- 19 TSDATA 2
- 21 TSDATA 0
- 23 GND
- 25 Not connect
- 27 Not connect
- 29 GND
- 31 MCLK 27 MF
- 33 Not connect

(UMT LLC)

!

/