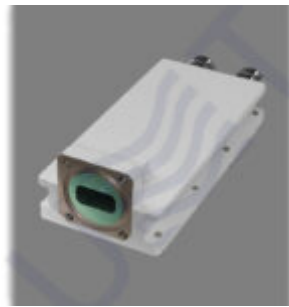


LNB PLL DUAL LO: 9.75 + 10.60 V.2



Ku-band LNB PLL	9.75	10.60
: ± 2.5	: 55	: 0.8

Ku-band LNB PLL dual LO 9.75 10.6 v.2 is Low Noise Block Down Converter which is designed for RF signals gaining and transforming from Ku-band to L-band (intermediate frequencies). The Ku-band LNB PLL dual LO 9.75 10.6 has a waterproof case. Ku-band LNB PLL dual LO 9.75 10.6 could be mounted in close proximity to antenna. Ku-band LNB PLL dual LO 9.75 10.6 v.2 has input flange PBR120 and could be used with regular RRL or receiving antennas.

KEY FEATURES:

- Dual independent output (**LB** and **HB**)
- Flange PBR120 input
- Output power P1dB: 0 dBm
- Input frequencies:
 - LB:** 10.7 – 11.7 GHz, **HB:** 11.7 – 12.75 GHz
- Output frequencies:
 - LB:** 950 – 1950 MHz, **HB:** 1100 – 2150 MHz
- Min. gain: 55 dB typ.
- LO stability (over temp.): ± 2.5 ppm
- Operating temp.: -30 ... +60
- Oscillator type: PLL

:	
	LB: 10.7-11.7 GHz; HB: 11.7-12.75 GHz
	-60 dBm
VSWR	2
	Waveguide WR75, Flange PBR120
:	
LO	LB: 9.75 GHz; HB: 10.6 GHz
LO:	
@1 kHz	-73 dBc/Hz
@10 kHz	-83 dBc/Hz
@100 kHz	-95 dBc/Hz
LO	± 2 ppm (± 1 ppm by request)
:	
	LB: 950-1950 MHz; HB: 1100-2150 MHz
P1dB	0 dBm
	55 dB
	N-type female
	50 Ohm
VSWR	2
:	
	± 2 dB

	27MHz ±0.75 dB
:	
(@+25)	0.8 dB max
LO	-50 dBm
	50 dBc
:	
	13 – 18 VDC, nominal 18 VDC
	3.9 W
:	
	-30 to +60 (-22 to +140)
	-30 to +80 (-22 to +176)
	0% – 95%
:	
(W x H x D)	59x41x144 mm
	0.44 kg

(UMT LLC)

!

/