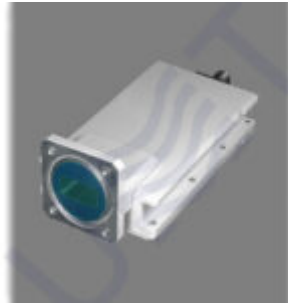


### LNB PLL LO 10.60



LNB Ku PLL LO 10.60  
P1dB: +3 dBm.

(LNB)

10.60 GHz

:	
	11.55 – 12.55 GHz
	-57 dBm
VSWR	2.0
	Waveguide WR75, Flange PBR120
:	
LO	10.60 GHz
LO:	
@1 kHz	-75 dBc/Hz
@10 kHz	-85 dBc/Hz
@100 kHz	-95 dBc/Hz
LO	$\pm 150$ kHz
:	

	950 – 1950 (or by order)
P1dB	+3 dBm
	45 dB
	F-type female
	75 Ohm
VSWR	2.5
:	
	±2 dB
27MHz	±0.75 dB
:	
(@+25 )	0.9 dB max
LO	-45 dBm
	45 dBc
:	
	12 VDC – 24 VDC, nominal 18 VDC
	5.25 W
:	
	-30 to +60 (-22 to +140 )
	-40 to +80 (-40 to +176 )
	0% – 95%
:	

(W x H x D)	60x42x126 mm
	0.4 kg

( UMT LLC)

!

/