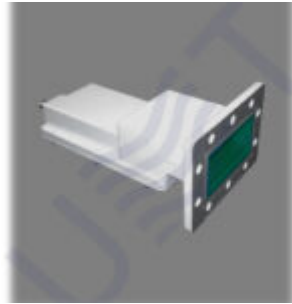


## LNB PLL LO 5.15



C-band LNB PLL LO 5.15 is Low Noise Block Down Converter with single LO 5.15 GHz and single 75 Ohm F-type output. LO instability (depends on temp.):  $\pm 2...100$  kHz, Gain: 58 dB, Noise figure: 30K, Output power P1dB: +3 dBm

C-band LNB PLL LO 5.15 is Low Noise Block Down Converter which is designed for RF signals gaining and transforming from C-band to L-band (intermediate frequencies). The LNB PLL LO 5.15 has a waterproof case. LNB PLL LO 5.15 can be mounted in close proximity to antenna. LNB parameters correspond to MVDS / MITRIS TV broadcasting systems conditions in accordance with DVB-S/S2 or DVB-C standard and can be operated up to 25 carriers. LNB PLL LO 5.15 has input flange of CPR-229G type and can be used with regular RRL or receive antennas.

**LO:** 5.15 GHz **IN:** 3.4 – 4.2 GHz **OUT:** 950 – 1750 MHz

### KEY FEATURES:

- Input flange CPR-229G
- Output power (P1dB) +3 dBm
- Output frequencies 950 – 1750 MHz
- Gain 58 dB (min)
- Oscillator type PLL
- Operates up to 25 carriers
- Designed for operation in MVDS/MITRIS TV broadcasting systems

Input Frequency	3.4 ... 4.2 GHz
Waveguide interface	WR-229
Flange	CPR-229G
Input VSWR	2.5:1
Impedance	50 Ohm
<b>Output parameters</b>	
Output Frequency	950 ... 1750 MHz
Output VSWR	2.2:1
Output Interface	F-type (female)
Impedance	75 Ohm
<b>Local frequency</b>	
LO frequency	5.15 GHz
LO instability	$\pm 2$ to $\pm 50$ kHz (room temp.) $\pm 10$ to $\pm 100$ kHz (over room temp.)
LO Phase noise:	
@1kHz	-65dBc/Hz
@10kHz	-80dBc/Hz
@100kHz	-95dBc/Hz
@1MHz	-110dBc/Hz
<b>Characteristics</b>	
Gain	58 dB

Flatness	$\pm 2$ dB @ full band
Ripple	$\pm 0.75$ dB @ 30 MHz
Variation	$\pm 2$ dB max
Noise figure	30K max
P1dB	+3 dBm
Image rejection	45 dB min
<b>Power Supply</b>	
Input voltage	+12 V ... + 24 V DC
Required current	300 mA max
<b>Environmental</b>	
Operating temperature	-30 to +60
Storage temperature	-40 to +80
Operating humidity	0% – 95% RH
<b>Mechanical</b>	
Dimensions (W x H x D)	98x70x138 mm
Weight	0.645 kg

*Taking into consideration that we (ROKS PrJSC) are developer and system integrator, also do not stop on our technical growth and improvement, know that view of all our devices and equipment including their technical parameters may be different from pictures presented on website and parameters listed on each device webpage.*

**Note!** *All details customer has to confirm in advance during ordering and before payment. Those parameters that were not specified and / or were not agreed while ordering will be implemented as basic at the discretion of the manufacturer. Each our customer has 1.5 year warranty and 7 year aftersales support for whole range of our products.*