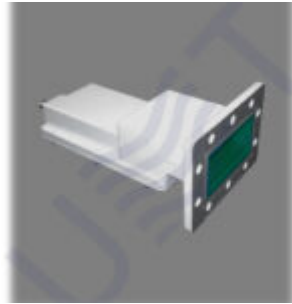


LNB PLL LO 5.75



LNB C PLL LO 5.75
30K P1dB: +3 dBm

(LNB)

5.75 GHz

- Input flange CPR-229G
- Output power (P1dB) +3 dBm
- Output frequencies 950 – 1250 MHz
- Gain 58 dB (min)
- Oscillator type PLL
- Operates up to 25 carriers
- Designed for operation in MVDS/MITRIS TV broadcasting systems

	4.5 ... 4.5 GHz
	WR-229
	CPR-229G
VSWR	2.5:1
	50 Ohm
	950 ... 1250 MHz

VSWR	2.2:1
	F-type ()
	75 Ohm
LO	5.75 GHz
LO	$\pm 2 \pm 50$ kHz ()
LO:	$\pm 10 \pm 100$ kHz ()
@1kHz	-65dBc/Hz
@10kHz	-80dBc/Hz
@100kHz	-95dBc/Hz
@1MHz	-110dBc/Hz
	58 dB
	± 2 dB @
	± 0.75 dB @ 30 MHz
	± 2 dB
	30K
P1dB	+3 dBm
	45 dB
	+12 V ... + 24 V DC

	300 mA
	-30 to +60
	-40 to +80
	0% – 95% RH
(W x H x D)	98x70x138 mm
	0.645 kg

(UMT LLC)

!

/