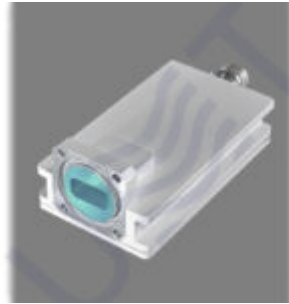


PLL LNB WITH AGC L.O. 10.25



PLL LNB with AGC L.O. 10.25

:	
	11.2 – 12.0
	– 65 ... -15 dBm
VSWR	1.8
	Waveguide WR75, Flange UBR120
:	
LO	10.25
LO:	
@1 kHz	-77 dBc/Hz
@10 kHz	-87 dBc/Hz
@100 kHz	-97 dBc/Hz
LO	± 100 kHz ()
:	
	950 – 1750 MHz

@P1dB	0 dBm
	40 dB
	N/F-type female ()
	50/75 Ohm
VSWR	1.8 : 1
:	
	3 dB
27MHz	0.5 dB
:	
	5.0 dB
LO	-50 dBm
	60 dBc
:	
	15 VDC – 30 VDC, nominal 18 VDC
	5 W
:	
	-40 to +60 (-40 to +140)
	-40 to +80 (-40 to +176)
	0% – 95%
:	
(W x H x D)	55x38x116 mm

	0.25 kg
--	---------

(UMT LLC)

!

/