

## DVB-T2 MODULATOR BOARD



High-performance UHF (174–862 MHz) DVB-T2 modulator board with ASI input – designed for OEM integration, supports advanced digital terrestrial broadcasting with robust signal quality and efficient spectrum utilization.

L-band DVB-S-S2-T modulator board can be used in various converters, modulators, transmodulators and other digital broadcasting equipment.

The sources of input transport stream for this modulator board may be the followings:

- [2 ch DVB-S-S2 receiver](#);
- [DVB IP input/output board](#);
- [DVB ASI TS input board](#);
- *etc.*

### KEY FEATURES:

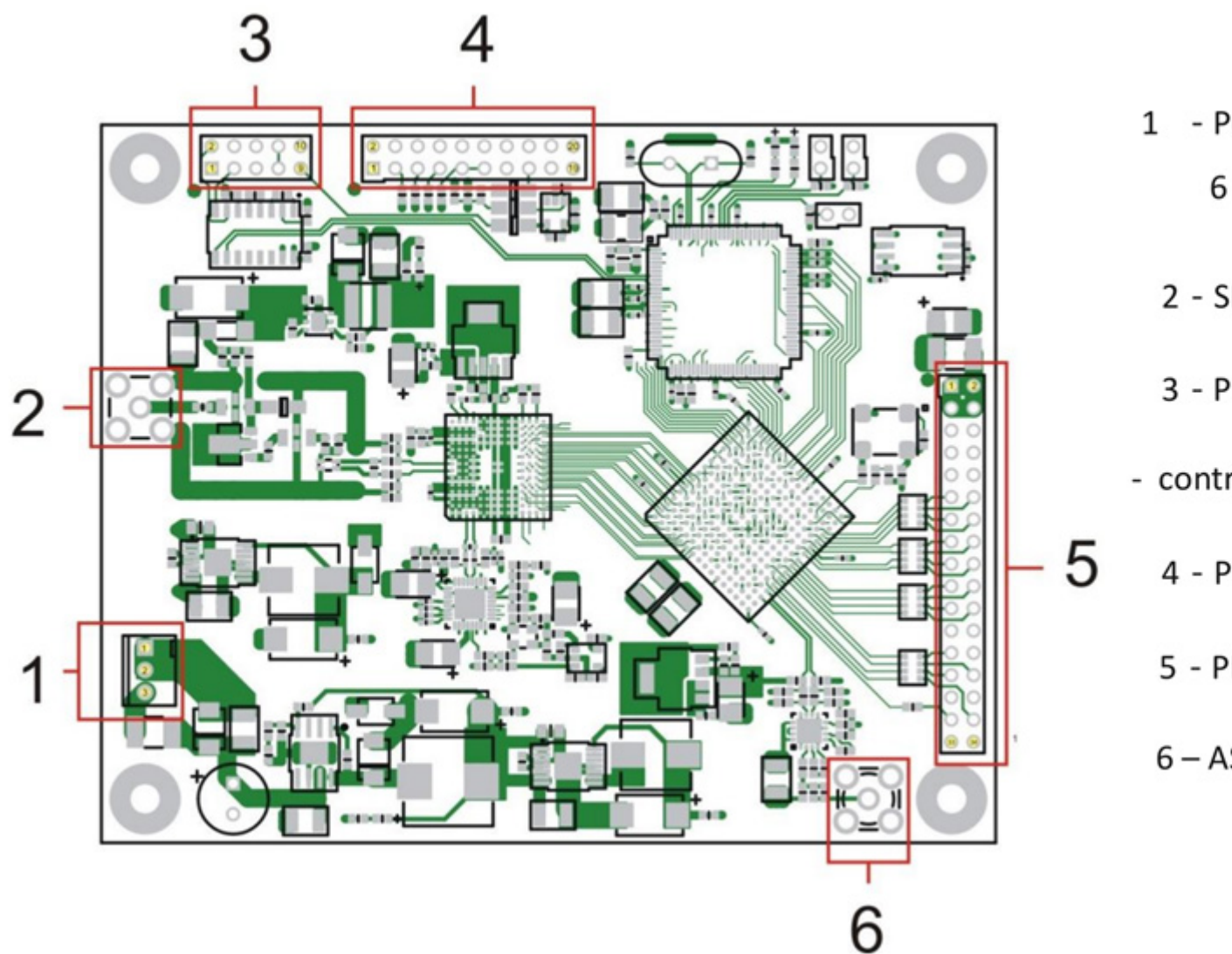
- High quality of the modulated signal;
- Remote management, monitoring and configuration by IP (using our [IP control board](#))
- High symbol rate;
- Modulation up to 32APSK;
- Small size and low power consumption;
- Flexibility of scheme and devices which include our [DVB boards](#).

**[Video instructions about L-band DVB-S-S2-T modulator board watch here](#)** 

<b>Modulation type</b>	<b>DVB-T2</b>
------------------------	---------------

Input	
Input signal	parallel DVB transport stream from compatible modules or ASI input
Type of input connector	PLD-34
Modulation parameters	
DVB-T2 mode	
Frequency range	whole UHF (174–862 MHz)
Constellation	QPSK, 16QAM, 64QAM, 256QAM
MER	>42 dB@ 500MHz
TS Mode Adaption	Normal, High eff
FEC Frame Size	Normal, Short
Coderate	1/2, 3/5, 2/3, 3/4, 4/5, 5/6
Data Constellation	QPSK, 16QAM, 64QMA, 256QAM
L1-Post Constellation	BPSK, QPSK, 16QAM, 64QAM
Constellation Rotate	Enabled, Disabled
Carrier Mode	1k, 2k, 4k, 8k, 8kext., 16k, 16k ext.
Pilot S	PP2, PP3, PP8
Guard Interval	1/4, 19/128, 1/8, 19/256, 1/16, 1/32, 1/128
Bandwidth	1.7, 5, 6, 7 and 8 MHz
Output	
RFout	-6 dBm.... +4.2 dBm @ 50
Control Interface	TCP/IP

Supply voltage	8...16 V
Power consumption	~ 6 W
Board dimensions	102x82 mm



### Connector 1 - module power supply

1	GND
2	GND
3	8...16 VDC, 6 W

### Connector 3 - management module, RS-232

1	Not connected	2	TxD
3	RxD	4	Not connected
5	GND	6	Not connected
7	Con. with 8	8	Con. with 7
9	Reset	10	GND

### Connector 5 - transceiver

1	+ 5,0 V
3	+ 5,0 V
5	Not connect
7	Not connect
9	GND
11	TSCLK
13	Not connect
15	TSDATA 6
17	TSDATA 4
19	TSDATA 2
21	TSDATA 0
23	GND
25	Not connect
27	Not connect
29	GND
31	MCLK 27 MHz
33	Not connect

*Taking into consideration that we (UMT LLC) are developer and system integrator, also do not stop on our technical growth and improvement, know that view of all our devices and equipment including their technical parameters may be different from pictures presented on website and parameters listed on each device webpage. **Note!** All details customer has to confirm in advance during ordering and before payment. Those parameters that were not specified and / or were not agreed while ordering will be implemented as basic at the discretion of the manufacturer. Each our customer has 1.5 year warranty and 7 year aftersales support for whole range of our products.*