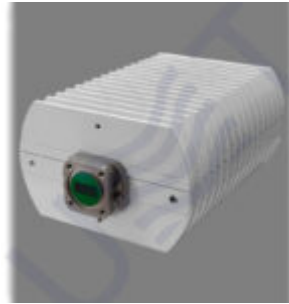


## BUC-KU20-11.8 V1.5



BUC-Ku20-11.8-v.2 is block up-converter with fixed output power P1dB **20 W** (ALC power: 2000 mW) and LO of **11.8 GHz**.

Our BUC operates with up to **25 carriers** and has built-in reference of **10 MHz**;

and **ALC** with 25 dB range;

+ **LED status** indication at the rear side.

Input parameters:	
<b>Input Frequency range</b>	950 – 1950 MHz
<b>Input impedance</b>	50 Ohm
<b>Input level, max</b>	-15 dBm
<b>Input VSWR, max</b>	1.5
<b>Input interface</b>	N-type Female
<b>ALC rage, min</b>	25 dB
<b>ALC threshold level</b>	-30 dBm
Local Oscillator:	
<b>LO frequency</b>	11800 MHz

<b>LO Phase noise:</b>	
<b>@1 kHz</b>	-80 dBc/Hz
<b>@10 kHz</b>	-85 dBc/Hz
<b>@100 kHz</b>	-100 dBc/Hz
<b>LO instability</b>	± 2 ppm

### Output parameters:

<b>Output frequency range</b>	12750 – 13750 MHz
<b>Output Power @P1dB</b>	20 W
<b>ALC Output Power</b>	2000 mW
<b>Gain, min</b>	63 dB
<b>IMD3 level at ALC Output Power, max</b>	-37 dBc
<b>Output interface</b>	Waveguide WR75, Flange PBR120
<b>Output VSWR, max</b>	2

### Frequency Response:

<b>Flatness over Full Band</b>	±1.5 dB
--------------------------------	---------

### Spurious:

<b>In-band @P1dB, max</b>	-55 dBc
<b>Out-Band, max</b>	-30 dBm
<b>LO leakage at ALC output power, max</b>	-40 dBm
<b>Image rejection, min</b>	60 dB

### Power supply:

<b>Input voltage</b>	18 VDC – 30 VDC, nominal 24 VDC
<b>Power consumption, max</b>	45 W
<b>Environmental:</b>	
<b>Operating temperature</b>	-40 to +50 (-40 to +122 )
<b>Storage temperature</b>	-60 to +80 (-76 to +176 )
<b>Operating humidity</b>	100%, non-condensing
<b>Mechanical:</b>	
<b>Dimensions (W x H x D)</b>	146x97x225 mm
<b>Weight</b>	2.95 kg

*Taking into consideration that we (UMT LLC) are developer and system integrator, also do not stop on our technical growth and improvement, know that view of all our devices and equipment including their technical parameters may be different from pictures presented on website and parameters*

*listed on each device webpage.*

**Note!** *All details customer has to confirm in advance during ordering and before payment. Those parameters that were not specified and / or were not agreed while ordering will be implemented as basic at the discretion of the manufacturer. Each our customer has 1.5 year warranty and 7 year aftersales support for whole range of our products.*