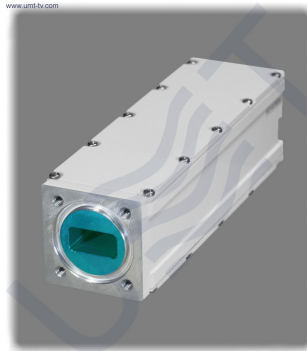


LNB PLL DUAL LO: 9.75 + 10.60



Ku-band LNB PLL dual LO 9.75 10.6 is Low Noise Block Down Converter with dual local oscillator 9.75 GHz and 10.6 GHz and dual 75 Ohm F-type output. LO instability: ± 10 kHz, Gain: 55 dB, Noise figure: 0.8 dB, Output power P1dB: +6 dBm.

Ku-band LNB PLL dual LO 9.75 10.6 is Low Noise Block Down Converter which is designed for RF signals gaining and transforming from Ku-band to L-band (intermediate frequencies). The Ku-band LNB PLL dual LO 9.75 10.6 has a waterproof case. Ku-band LNB PLL dual LO 9.75 10.6 could be mounted in close proximity to antenna. LNB parameters correspond to MVDS / MITRIS TV broadcasting systems conditions in accordance with DVB-S/S2 or DVB-C standard and can be operated up to 25 carriers. Ku-band LNB PLL dual LO 9.75 10.6 has input flange PBR120 and could be used with regular RRL or receiving antennas.

KEY FEATURES:

- Dual independent output (**LB** and **HB**)
- Flange PBR120 input
- Output power P1dB +6 dBm
- Input frequencies:
 - LB:** 10.7 – 11.7 GHz, **HB:** 11.7 – 12.75 GHz
- Output frequencies:
 - LB:** 950 – 1950 MHz, **HB:** 1100 - 2150 MHz
- Min. gain: 55 dB typ.
- LO stability (over temp.): ± 10 kHz
- Operating temp.: -40°C ... +60°C
- Oscillator type: PLL
- Operates up to 25 carriers
- Designed for operation in MVDS/MITRIS TV broadcasting systems

Input parameters:	
Input Frequency range	LB: 10.7-11.7 GHz; HB: 11.7-12.75 GHz
Input level, max	-49 dBm
Input VSWR, max	2
Input interface	Waveguide WR75, Flange PBR120
Local Oscillator:	
LO frequency	LB: 9.75 GHz; HB: 10.6 GHz

LO Phase noise:	
@1 kHz	-73 dBc/Hz
@10 kHz	-83 dBc/Hz
@100 kHz	-95 dBc/Hz
LO instability	± 10 kHz
Output parameters:	
Output frequency range	LB: 950-1950 MHz; HB: 1100-2150 MHz
Output Power @P1dB	+6 dBm
Gain, min	55 dB
Output interface	F-type female
Output impedance	75 Ohm
Output VSWR, max	2
Frequency Response:	
Flatness over Full Band	±2 dB
Flatness over 27MHz Band	±0.75 dB
Spurious:	
Noise Figure (@+25°C)	0.8 dB max
LO leakage, max	-50 dBm
Image rejection, min	50 dBc
Power supply:	
Input voltage	13 - 18 VDC, nominal 18 VDC
Power consumption, max	3.9 W
Environmental:	
Operating temperature	-40°C to +60°C (-40°F to +140°F)
Storage temperature	-40°C to +80°C (-40°F to +176°F)
Operating humidity	0% - 95%
Mechanical:	
Dimensions (W x H x D)	40x42x169.5 mm
Weight	0.4 kg

Taking into consideration that we (UMT LLC) are developer and system integrator, also do not stop on our technical growth and improvement, know that view of all our devices and equipment including their technical parameters may be different from pictures presented on website and parameters listed on each device webpage.

Note! All details customer has to confirm in advance during ordering and before payment. Those parameters that were not specified and / or were not agreed while ordering will be implemented as basic at the discretion of the manufacturer. Each our customer has 1.5 year warranty and 7 year aftersales support for whole range of our products.