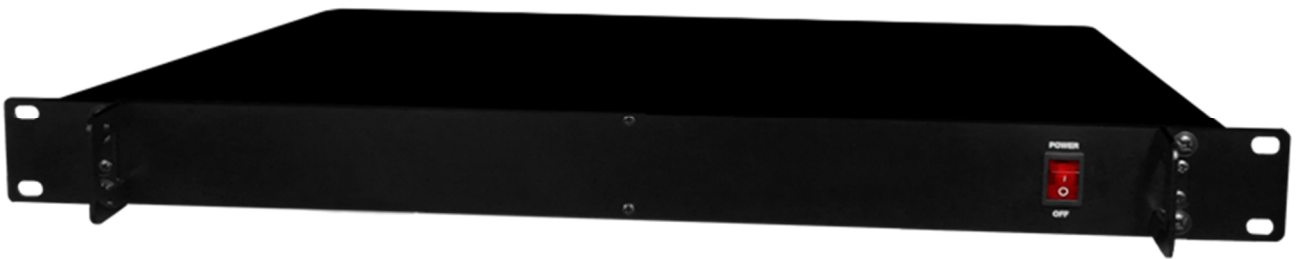


DVB-S2 MODULATOR

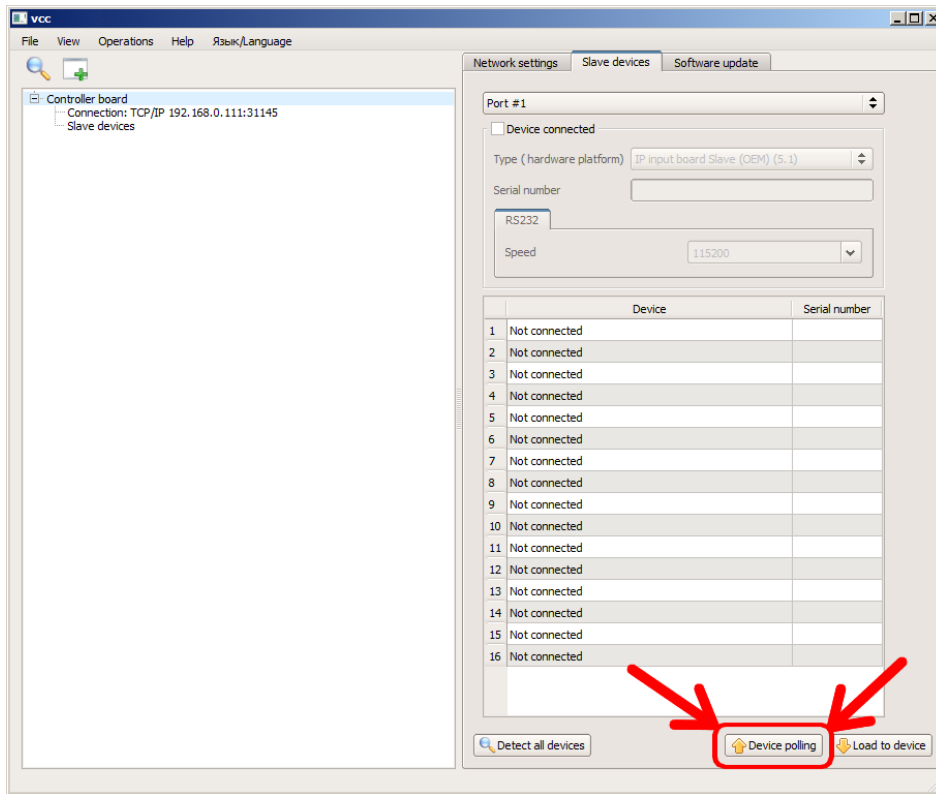
user's manual



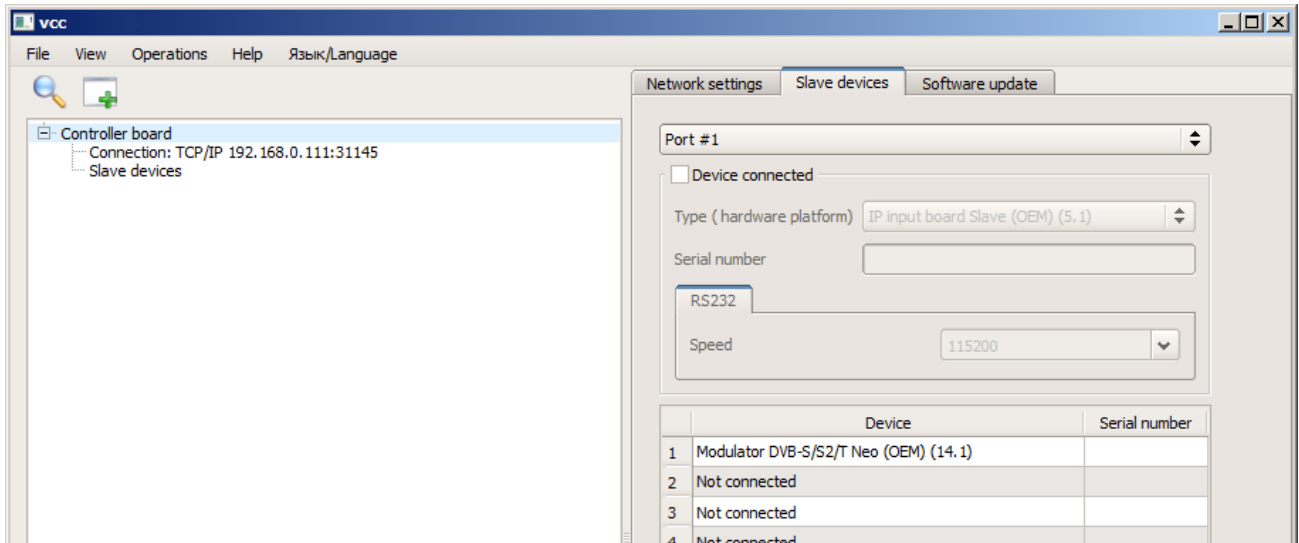
(VCC software)

CONTENT

How to add the device to the system?	3
How to manage the device?	5



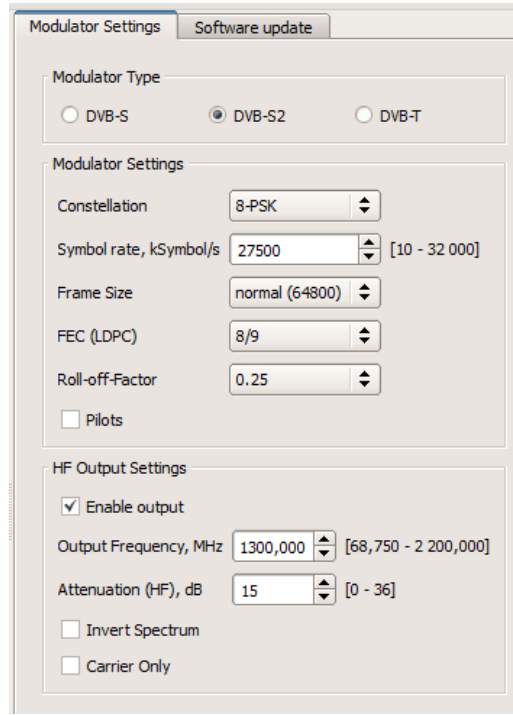
As a result you will see the following information about connected modulators:



How to manage the device?

Each **modulator** forms one channel.

In the modulator window first of all click “*Device polling*” then you may set parameters filled on the following screenshot for further broadcasting:



After all changes do not forget click “*Load to device*”:



UMT LLC

UMT LLC
03148 Ukraine, Kyiv,
V. Verkhovyntsyia str., 10
tel.: +380991843430

Contact information:

For additional information please visit: <http://www.umt-tv.com>

For sales offices addresses send e-mail to: info@umt-tv.com

© UMT LLC

All rights are reserved. Reproduction in whole or in part is prohibited without the prior written consent of the copyright owner. The information presented in this document does not form part of any quotation or contract, is believed to be accurate and reliable and may be changed without notice. No liability will be accepted by the publisher for any consequence of its use. Publication thereof does not convey nor imply any license under patent or other industrial or intellectual property rights.